

Multi-function Meter Box

DB11

Brief Introduction

DB11 Multi-function Distribution box is specially designed for the purpose of anti-tamper and protection of meter and power distribution. Maximum 8(Eight) pcs DIN Rail meters can be mounted with bottom connection. The material of enclosure is polycarbonate with UV resistance and V0 frame resistance degree. Pole mounted or wall mounted and Lock, key protection are based on project demand. Alarm sensor for enclosure opening is reserved function. It is widely used in for power terminal system in city and village.

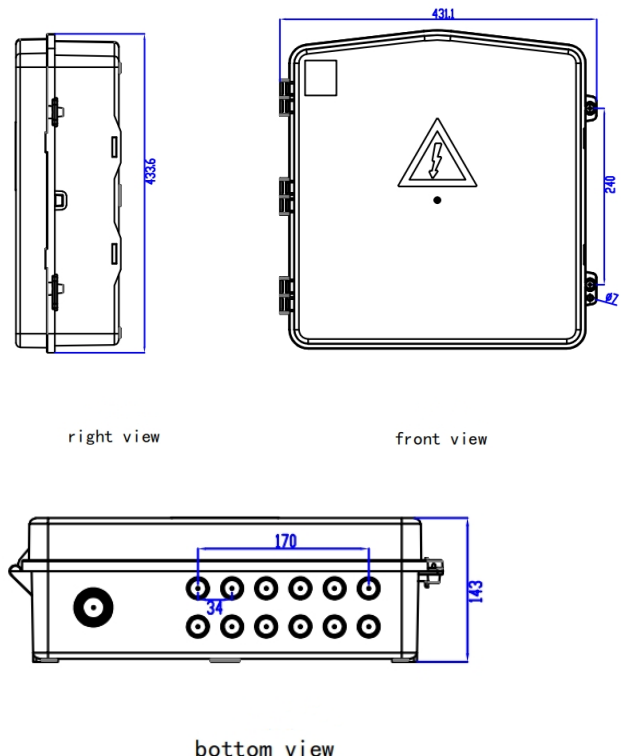


Specification

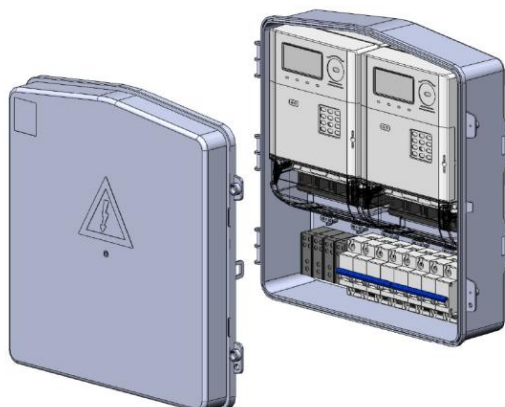
Items	Parameters
Dimension	L433.6mm*W431.1mm*H143mm
Material of top cover	PC+10%GF non-transparent/PC transparent
Material of base	PC+10%GF non- transparent
Protection degree	IP55(without heat dissipation or water drainage hole), IK10
Anti-UV	Yes
Flame resistance degree	V0
Anti-tamper protection	Seal and padlock for cover and seal for windows
Temperature	-30℃ to 80℃
Installation provision for MCB	Yes
Mounting methods	Pole mounted by stainless steel strap or wall mounted by screw
Thickness	Top cover 2.5mm, base 2.7mm

Noted: Material can be customized

Dimension Drawing



Components



- Top cover
- Base
- Energy Meter
- MCB

Installation Accessories

Option installation accessories (cost will be different based on the accessories)



1PCS PG29 & 12
PCS PG13.5



Rubber plug



4PCS M8*40mm
Expand plug
4PCS ST5*35mm
Self-tapping screw



3PCS ST4*12mm
Self-tapping screw



2PCS 800*12*0.25
Stainless steel
strap

Installation Methods



Wall installation



Pole installation

Quantity in Different Containers

Containers	Quantity
20GP	975
40HQ	2160

Each meter enclosure is packed in a plastic bag, then in a carton, the carton is sealed by tape and tie. Optional inner box for each meter enclosure and pallet. Cost based on the final package design.